

# Mapping of Urban Tanks / Rivers and Changes Gollaprolu Urban Local Body, Kakinada District, Andhra Pradesh



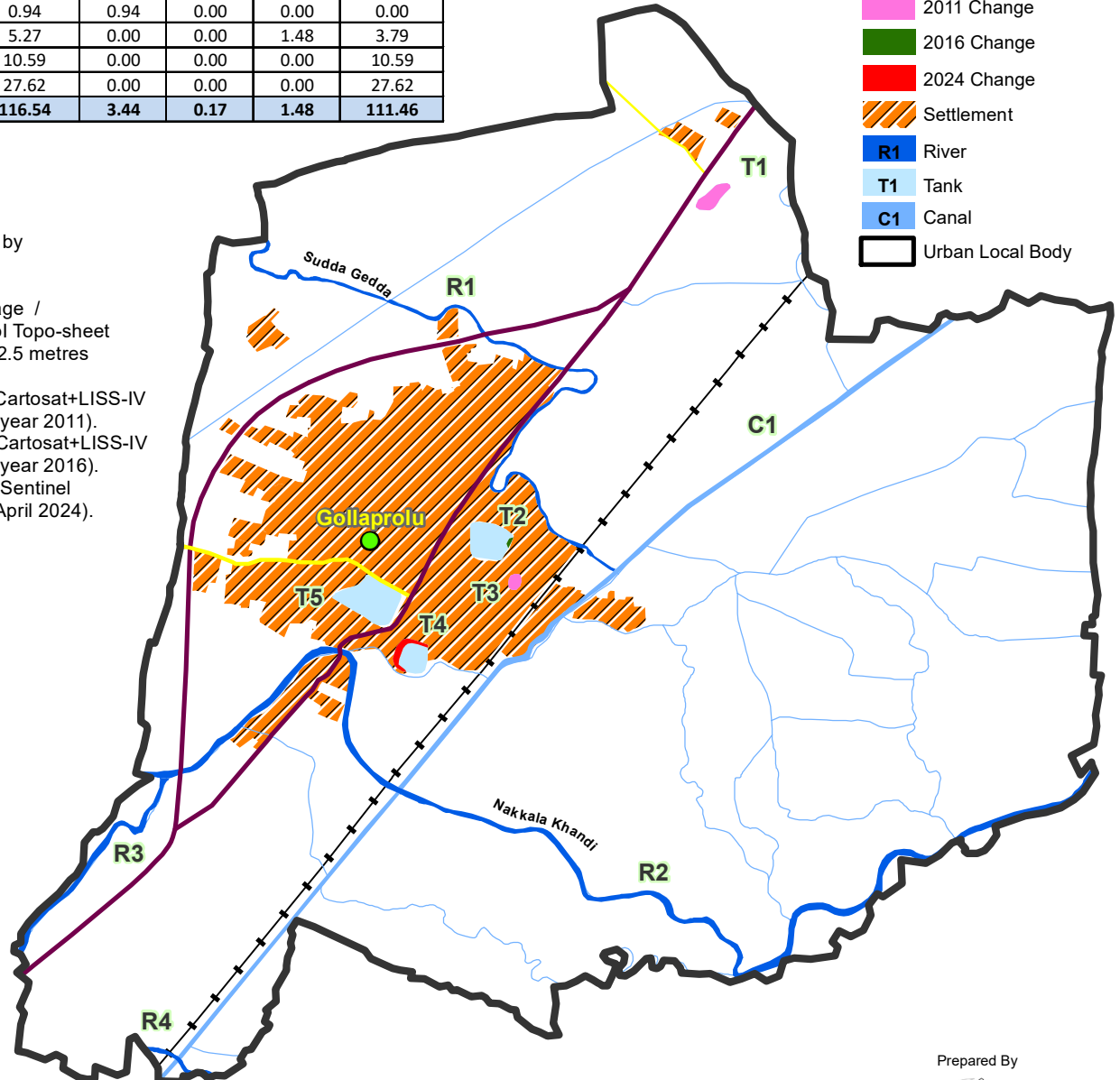
S.No	Waterbody Name (Refer Map)	Water Body Local Name	Total Waterbody	2011 Change	2016 Change	2024 Change	Remaining Waterbody
1	River(1)	Sudda Gedda	13.67	0.00	0.00	0.00	13.67
2	River(2)	Nakkala Khandi	40.51	0.00	0.00	0.00	40.51
3	River(3)	Nakkala Khandi	6.76	0.00	0.00	0.00	6.76
4	River(4)	Nakkala Khandi	1.66	0.00	0.00	0.00	1.66
5	Tank(1)	Gollaprolu	2.50	2.50	0.00	0.00	0.00
6	Tank(2)	Gollaprolu	7.03	0.00	0.17	0.00	6.86
7	Tank(3)	Gollaprolu	0.94	0.94	0.00	0.00	0.00
8	Tank(4)	Gollaprolu	5.27	0.00	0.00	1.48	3.79
9	Tank(5)	Gollaprolu	10.59	0.00	0.00	0.00	10.59
10	Canal(1)	Gollaprolu	27.62	0.00	0.00	0.00	27.62
<b>Grand Total</b>			<b>116.54</b>	<b>3.44</b>	<b>0.17</b>	<b>1.48</b>	<b>111.46</b>

## Legend

- Habitation
- National Highway
- State Highway
- District Road
- Railway Line
- Drainage
- 2011 Change
- 2016 Change
- 2024 Change
- Settlement
- R1 River
- T1 Tank
- C1 Canal
- Urban Local Body

### Data Source:

1. Urban Local Body Boundary provided by the Commissioner and Director of Municipal Administration, GoAP.
2. Tank / Lake / River / Reservoir / Drainage / Canal boundary digitized based on Sol Topo-sheet and Cartosat+LISS-IV Satellite Data (2.5 metres resolution) year 2011.
3. Changes of 2011 digitized based on Cartosat+LISS-IV Satellite Data (2.5 metres resolution - year 2011).
4. Changes of 2016 digitized based on Cartosat+LISS-IV Satellite Data (2.5 metres resolution - year 2016).
5. Changes of 2024 digitized based on Sentinel Satellite Data (10 metres resolution - April 2024).



### Coordinate Reference System:

Datum: WGS84  
Projection: UTM Zone 44N

Note: This map and contents are required to be ground-truthed and vetted by the Collector and District Magistrate, Kakinada District and the Stakeholder Departments.

0                      0.75                      1.5 Km

Prepared By



Andhra Pradesh Space Applications Centre  
ITE & C Department, Govt., of A.P.  
Vijayawada - 520010

82°16'30"E

82°18'0"E

17°10'30"N

17°10'30"N

17°9'0"N

17°9'0"N